

**SonicDICOM**

# **Multi-Monitor Helper Setup Manual**

Version 1.1

©2022 Fujidenolo Solutions Co., Ltd.  
All rights reserved.

# Contents

<b>Introduction</b>	<b>3</b>
Revision History	3
<b>1. Install</b>	<b>4</b>
1.1 Download Multi-Monitor Helper	4
1.2 Install Multi-Monitor Helper	4
<b>2. Set up Multi-Monitor</b>	<b>4</b>
2.1 Set up Multi-Monitor Helper	4
2.2 Link Multi-Monitor Helper to web browser	6
2.3 Set up Multi-Monitor on web browser	8
2.3.1 Screen Layout	8
2.3.2 Set up	9

# Introduction

Multi-monitor feature allows you to open a specified window of PACS at a specified position and size on multiple monitors, making more efficient use of workspace.

For example, Viewer window can be opened on a medical monochrome high-definition monitor, while List and Report windows can be opened on standard monitors.

Window opening position and size can be set in pixel units, so that multiple windows can be opened side by side in a single monitor.

To use this feature, the Multi-Monitor Helper software for Windows needs to be installed.

This manual guides how to set up Multi-monitor.

## Revision History

Revision	Date	Description
1.0	May 10, 2022	Initial version
1.1	September 30, 2022	Some expressions have been changed.

# 1. Install

## 1.1 Download Multi-Monitor Helper

Multi-Monitor Helper is free software which is available for Windows only.

Access and download it from the following URL.

[https://files.sonicdicom.com/Multi\\_Monitor\\_Helper\\_Setup.exe](https://files.sonicdicom.com/Multi_Monitor_Helper_Setup.exe)

## 1.2 Install Multi-Monitor Helper

1. Right-click the downloaded installer and click "Run as administrator".

Note:

The installer will be installed directly under the system drive.

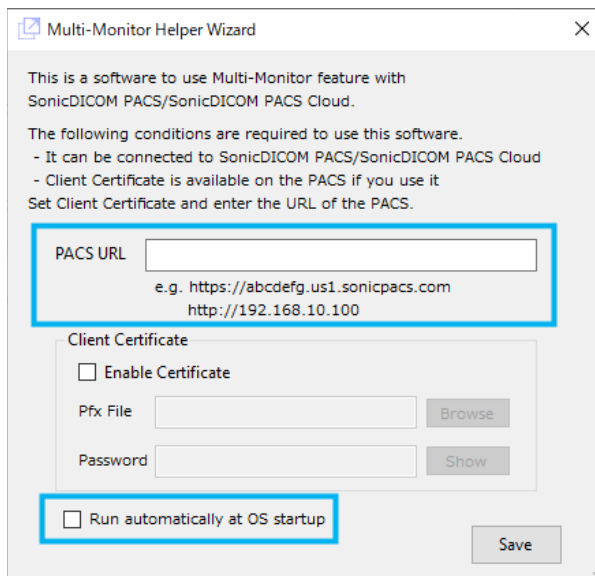
For example, if the system drive is C, it will be installed in "C:\Multi-Monitor Helper".

2. Follow the wizard to complete the setup.

# 2. Set up Multi-Monitor

## 2.1 Set up Multi-Monitor Helper

1. Run Multi-Monitor Helper as an administrator.
2. "Multi-Monitor Helper Wizard" will be displayed.

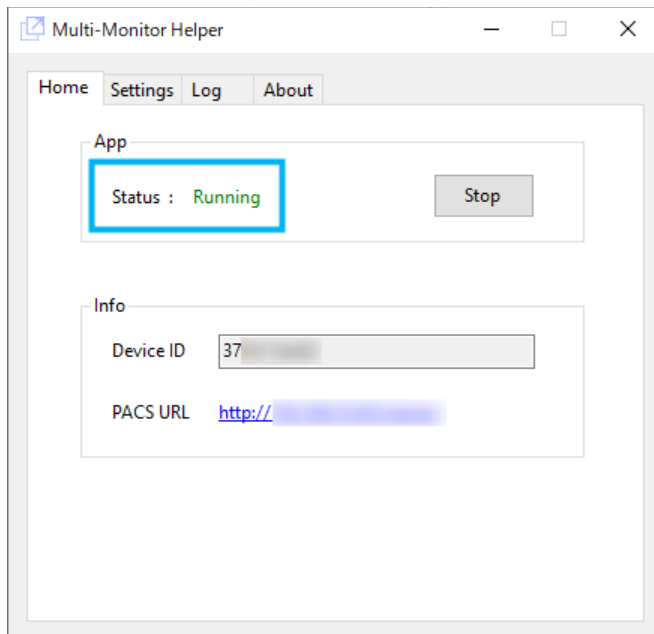


3. In "PACS URL" field, enter the URL of your PACS.

4. If you want Multi-Monitor Helper to run automatically at OS startup, check "Run automatically at OS startup".

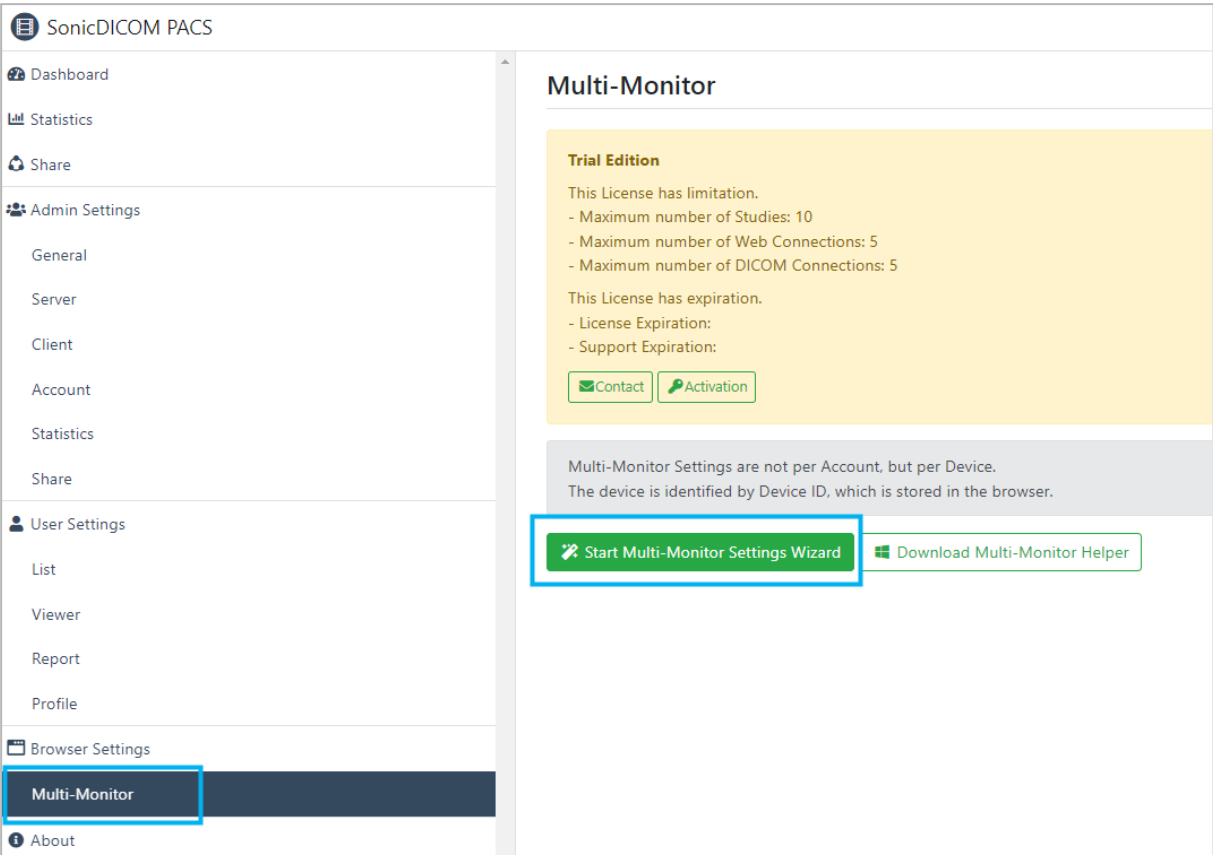
5. Click "Save".

6. Make sure that Status is "Running" in "Home" tab.

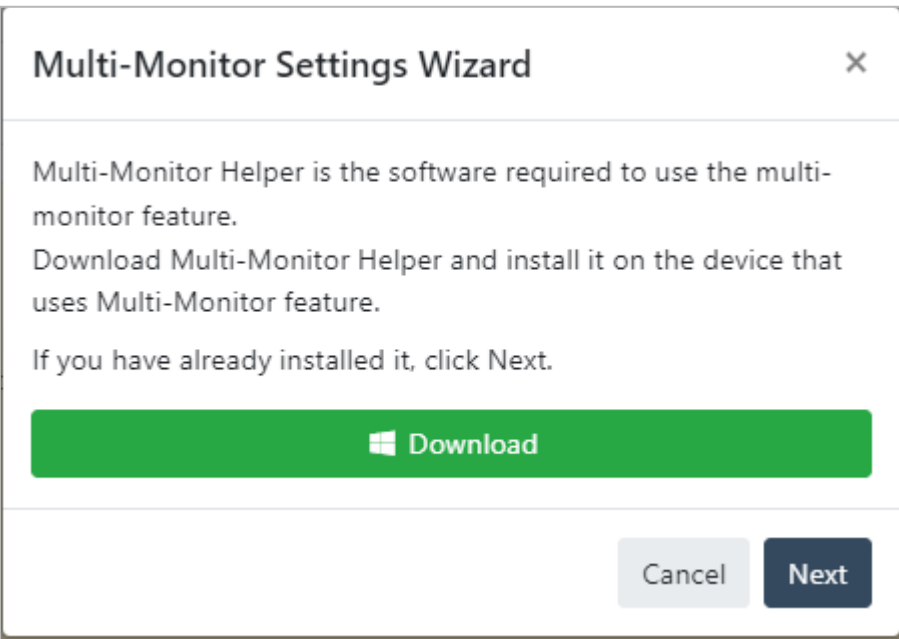


## 2.2 Link Multi-Monitor Helper to web browser

1. On the web browser of PACS, access Browser Settings > Multi-Monitor.
2. Click "Start Multi-Monitor Settings Wizard".

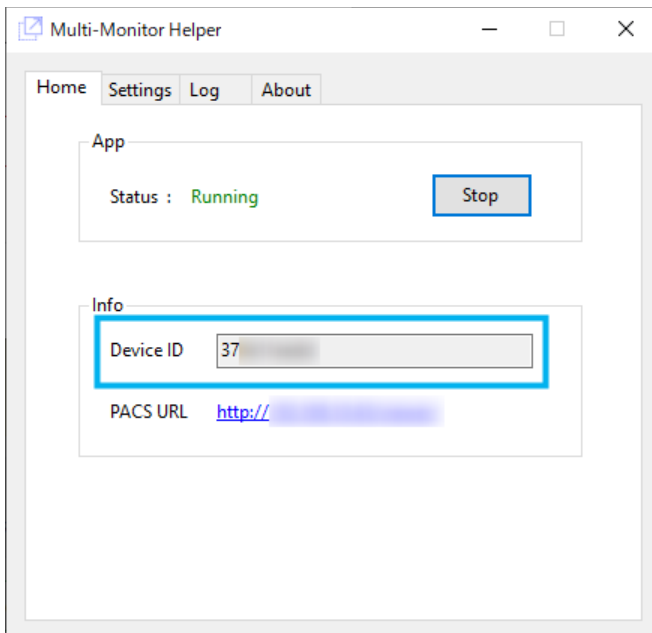


3. Dialog "Multi-Monitor Settings Wizard" is displayed.

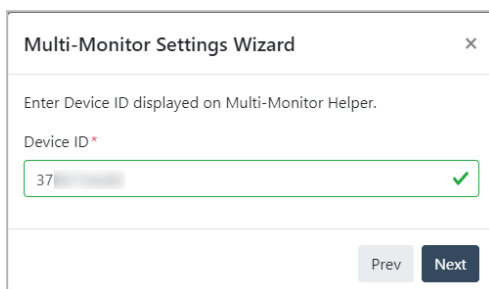


4. Click "Next".

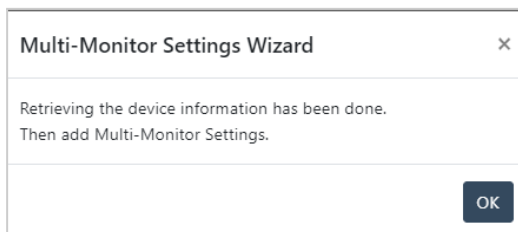
5. In Multi-Monitor Helper, copy Device ID.



5. Go back to the web browser of PACS. In "Multi-Monitor Settings Wizard", enter the Device ID copied in Step 5 and click "Next".



6. Linking Multi-Monitor Helper to web browser is complete. Click "OK".



## 2.3 Set up Multi-Monitor on web browser

### 2.3.1 Screen Layout

**Multi-Monitor**

Multi-Monitor Settings are not per Account, but per Device.  
The device is identified by Device ID, which is stored in the browser.

**A** Device

ID	Name		
37			

Monitor

	Name	Height	Width	Top	Left
1	DISPLAY1	1080	1920	0	-1920
2	DISPLAY2	1440	2560	0	0

**B** Multi-Monitor

In the environment where Multi-Monitor feature is available, item(s) on the toolbar will automatically be replaced with the item(s) for Multi-Monitor you set on this page. However, if the same item as the one for Multi-Monitor is not present on the toolbar, it will not be replaced.

List Viewer Report

	Item	Label	X	Y	Height	Width			
	Viewer	Monitor1	1210	180	900	1300			

Add Item to Toolbar

[Download Multi-Monitor Helper](#)

#### A) Device

Device ID and information of the device (each monitor) are displayed.

#### B) Multi-Monitor

You can make Multiple Monitor settings for each of List, Viewer, and Report pages.

For example, you can specify the followings to open Viewer page from List page:

1) on which monitor, 2) at which position, and 3) in what size to open the window of Viewer page.



### 2.3.2 Set up

1. In B) of the above image, select the tab of the page to which you would like to add a Multi-Monitor item from List/Viewer/Report.
2. Click "Add Item to Toolbar" button.
3. Dialog "Add Item to Toolbar" is displayed.

**Add Item to Toolbar** ×

Item \*

Description

Label \*

Window

Move this window to the desired position on your monitor and resize it. The position and size of the window are automatically entered into the form.

X \*

Y \*

Height \*

Width \*

Automatically enter the current window position and size

Set this item as a default

It is assumed that this item on the toolbar is clicked when you double-click an item on Study List.

Cancel Add

4. Set the following:

- [Item] Select an item (Viewer/Report/PDF) to set up Multi-Monitor.
- [Label] The display name of the selected item can be set.

For example: Monitor1, Monitor2

- [Window] Move the entire window in which the dialog "Add Item to Toolbar". It helps you to specify position and size of window.

If you check "Automatically enter the current window position and size", the values of position and size of the window will be automatically entered into the form as you move the window.

- [Set this item as a default] If you check this box, it is assumed that this Multi-Monitor item is clicked when you double-click an item on a study, series, or instance on Study List.

\* If you have already configured the settings for double-clicking in User Settings > List > General > Double Click, Multi-Monitor settings will take precedence and be overwritten.

5. Click "Add".

**Note: To display items (Viewer/Report/PDF) for Multi-Monitor on the toolbar, each item must be set as shown in User Setting > List > Toolbar.**

**These items will not be displayed on the toolbar if each item is set as hide.**

6. Check that setup items (List/Viewer/Report) are displayed on toolbar.

Click an item to confirm that it is displayed in the specified position and size on each monitor.