

**SonicDICOM PACS Cloud**

# **SonicDICOM Cloud Connector Setup Guide**

©2021 Fujidenolo Solutions Co., Ltd.  
All rights reserved.

# Contents

- Introduction ..... iii
- Version history ..... iii
- 1. Installation ..... 1
  - 1.1 Get ready ..... 1
    - 1.1.1 Create your PACS on the cloud ..... 1
    - 1.1.2 Get the installer of SonicDICOM Cloud Connector ..... 1
  - 1.2 Install SonicDICOM Cloud Connector ..... 1
- 2. Activate a license ..... 5
  - 2.1 Setting of SonicDICOM Cloud Connector ..... 5
    - 2.1.1 Enter the URL of SonicDICOM PACS Cloud ..... 5
    - 2.1.2 Add SonicDICOM Cloud Connector to SonicDICOM PACS Cloud ..... 6
    - 2.1.3 Activate SonicDICOM Cloud Connector ..... 7
- 3. Add DICOM Provider ..... 11
  - 3.1 Check necessary information ..... 11
    - 3.1.1 How to check your IP Address ..... 11
    - 3.1.2 How to check your Port Number used for DICOM communication ..... 11
    - 3.1.3 How to check your AE Title ..... 11
  - 3.2 Add DICOM Provider ..... 12
- 4. Register DICOM User ..... 14
  - 4.1 Register DICOM User ..... 14
  - 4.2 Add information of SonicDICOM Cloud Connector to modality ..... 17
  - 4.3 Restart SonicDICOM Cloud Connector ..... 17
- 5. Optional Settings ..... 18
  - 5.1 Upload the compressed data ..... 18

## Introduction

SonicDICOM Cloud Connector is a free software to automatically upload medical images that is scanned by modalities to SonicDICOM PACS Cloud.

This document describes how to install this software and how to make various settings.

If you have any questions, please contact the distributor or manufacturer.

## Version history

Version	Date	Description
1	March 29 <sup>th</sup> , 2019	The first edition issued.
2	November 25 <sup>th</sup> , 2020	Description on "Upload the compressed data" and other explanations have been added.
3	May 25 <sup>th</sup> , 2021	Some expressions, screenshots, and layouts have been changed.
4	July 2 <sup>nd</sup> , 2021	Some expressions, and screenshot have been changed.
5	November 1 <sup>st</sup> , 2021	The manufacturer's company name has been changed.

# 1. Installation

## 1.1 Get ready

### 1.1.1 Create your PACS on the cloud

In order to use SonicDICOM Cloud Connector, you need to create your account and PACS on the cloud. Click following link to create your PACS on the cloud by following guidance.

<SonicDICOM PACS Cloud>

<https://console.sonicpacs.com/>

### 1.1.2 Get the installer of SonicDICOM Cloud Connector

Download the installer from Download page of our product website.

<SonicDICOM Product website Download page>

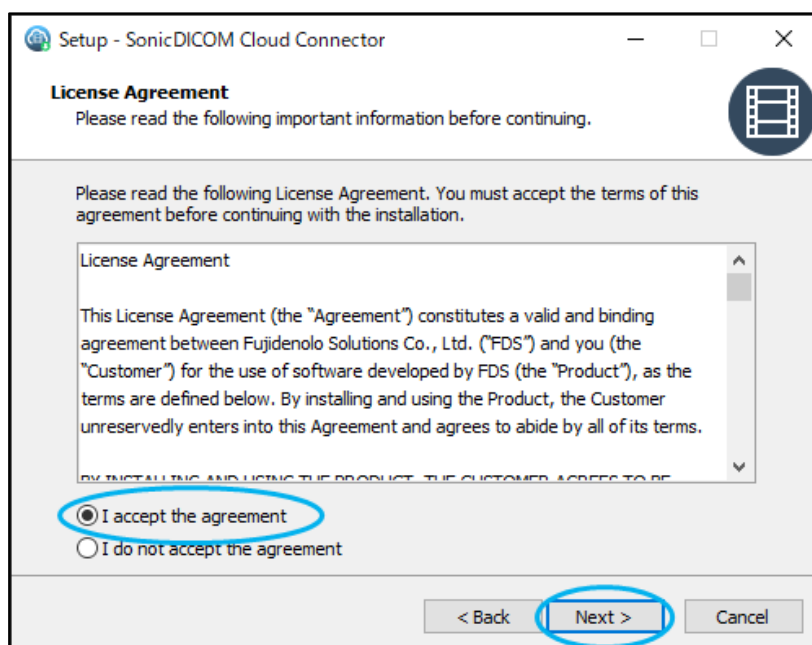
<https://sonicdicom.com/downloads/>

## 1.2 Install SonicDICOM Cloud Connector

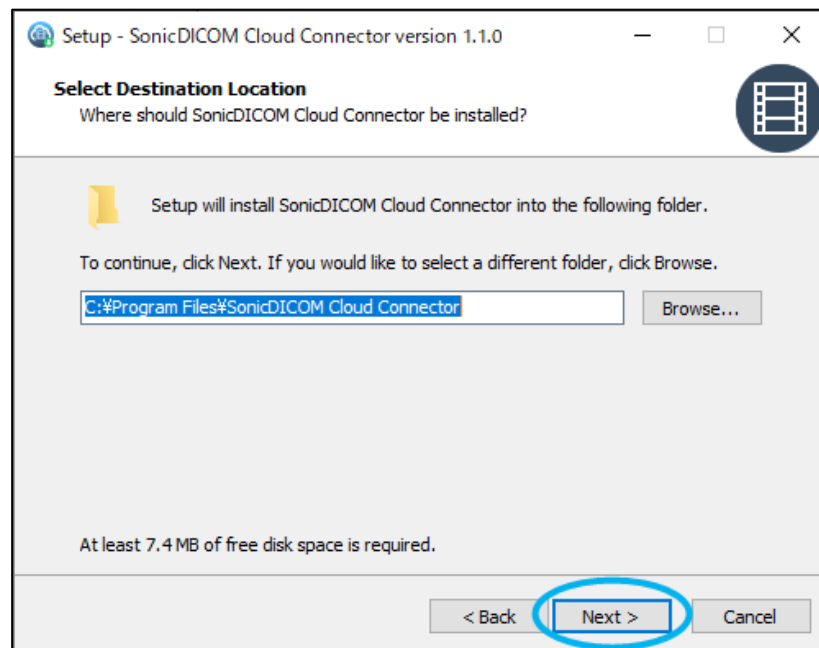
(1) Right-click on the installer "SonicDICOM\_Cloud\_Connector\_Setup.exe", and click "Run as administrator".

(2) The Setup screen will appear.

Read License Agreement and put a check mark on "I accept the agreement" after checking its contents. And then click "Next".

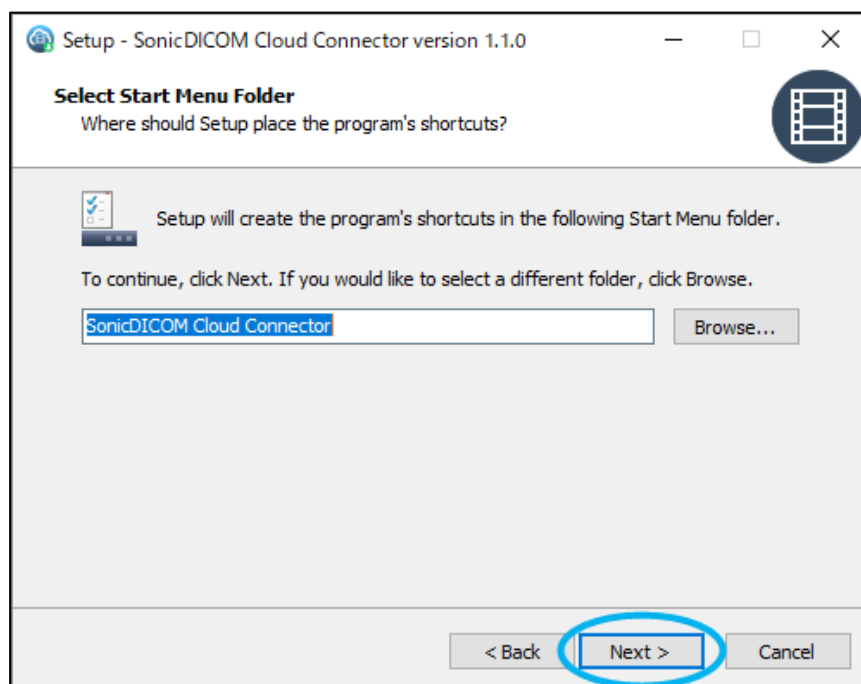


(3) Check a folder to install the software, then click "Next".

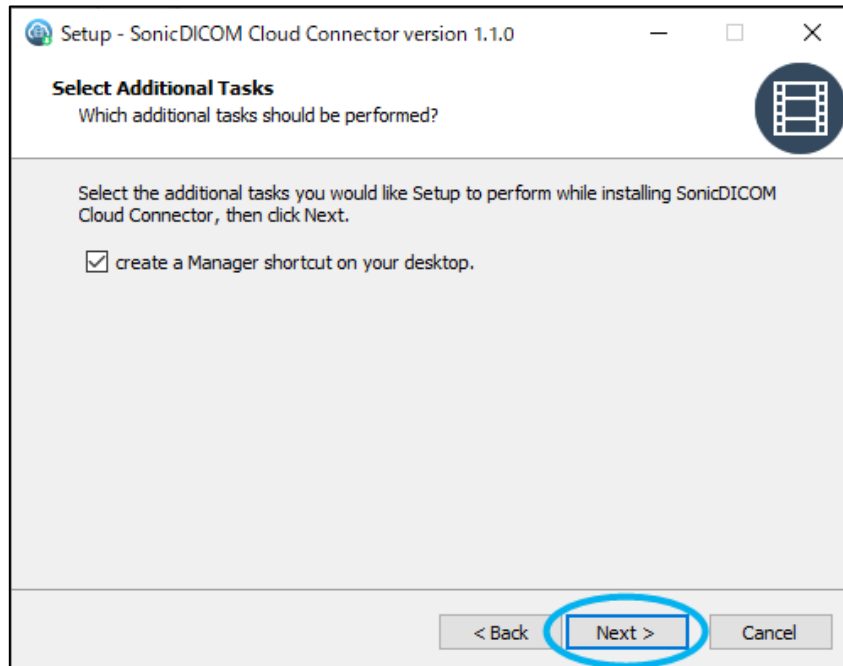


(4) Check a folder to store shortcut, then click "Next".

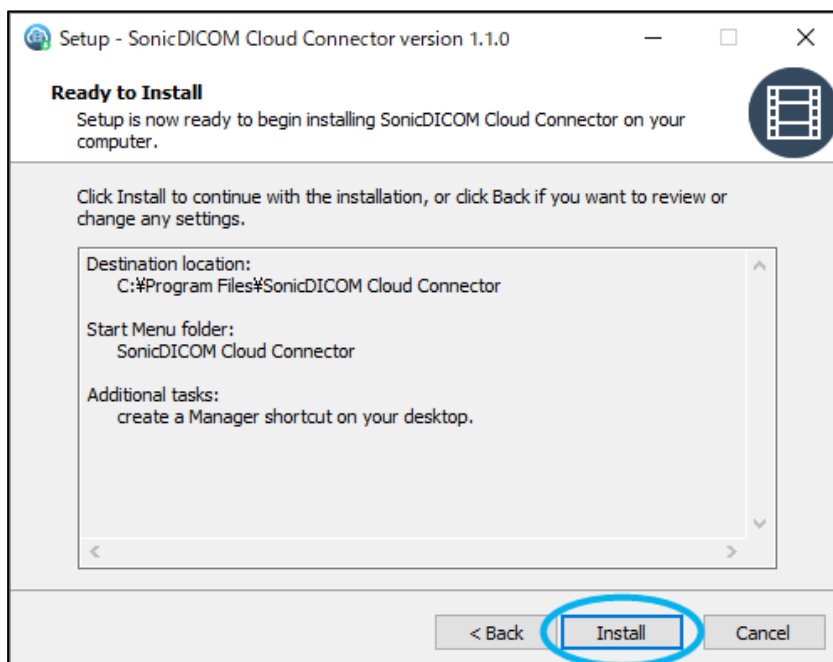
If no folder is specified, it will be created automatically.



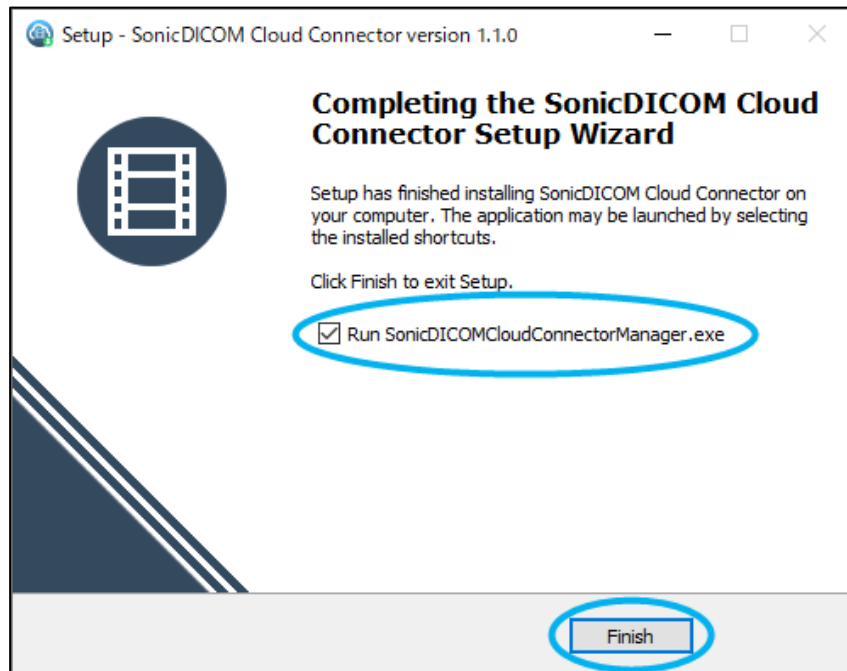
(5) If you would like to create a shortcut of the software on your desktop, put a check mark and click "Next".



(6) Check the contents to be installed, and click "Install".



(7) If you run SonicDICOM Cloud Connector and make settings after the installation is done, put a checkmark next to "Run SonicDICOMCloudConnectorManager.exe" and click "Finish".



Then setup will be completed.

## 2. Activate a license

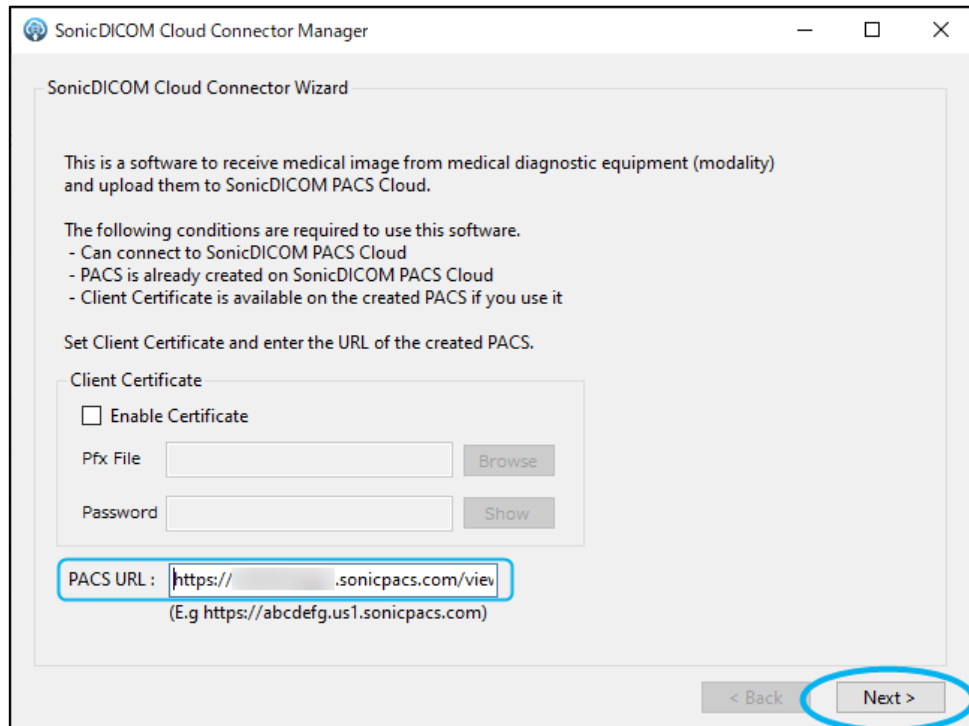
### 2.1 Setting of SonicDICOM Cloud Connector

A screen to choose the language will appear.

Choose "English".

#### 2.1.1 Enter the URL of SonicDICOM PACS Cloud

In "PACS URL" field of the wizard, enter the URL of SonicDICOM PACS Cloud that you created. And click "Next".



Note: "Client Certificate" is currently unavailable. Please skip this section.

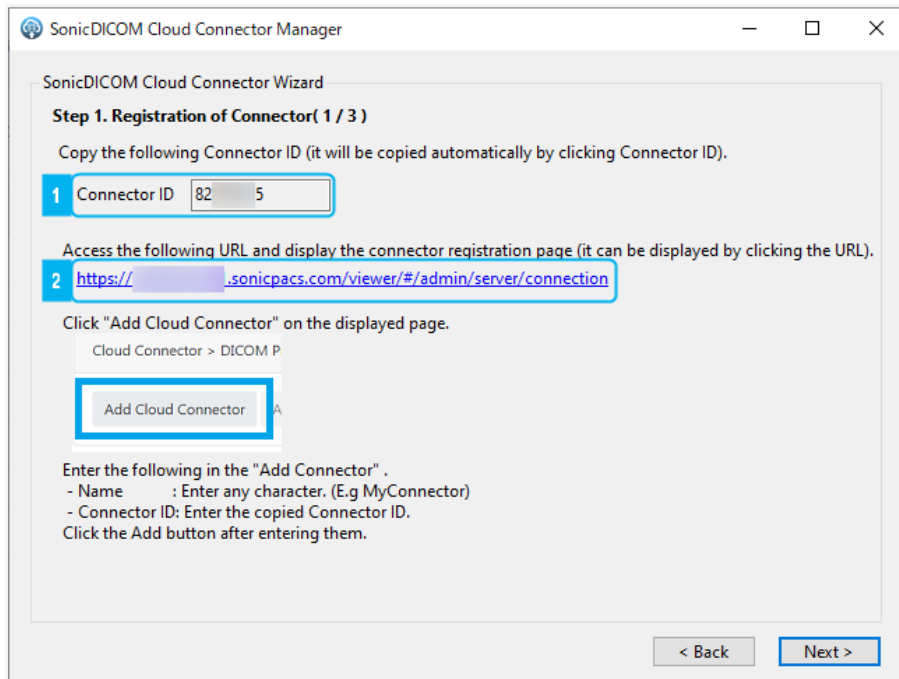
#### Tips 1: How to check the URL of SonicDICOM PACS Cloud

- 1) Access here: <https://console.sonicpacs.com/>
- 2) Log in to your PACS Console.
- 3) Click "Go to PACS".
- 4) Your PACS will open and you can copy the URL.



## 2.1.2 Add SonicDICOM Cloud Connector to SonicDICOM PACS Cloud

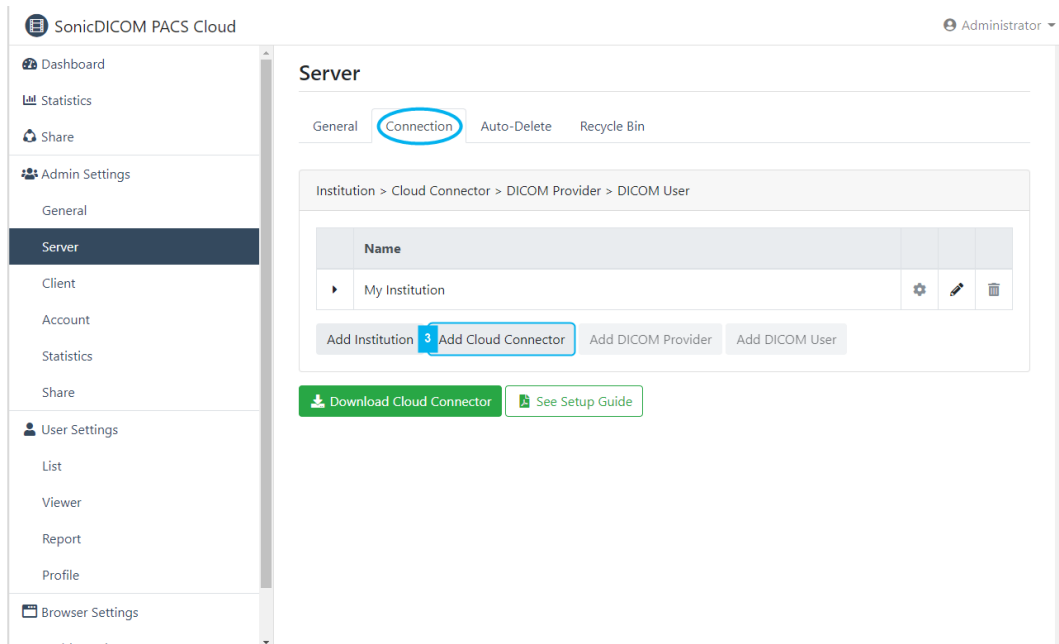
1) Wizard "Step1. Registration of Connector (1/3)" will appear.



2) Click on the Connector ID, and it will be copied automatically.

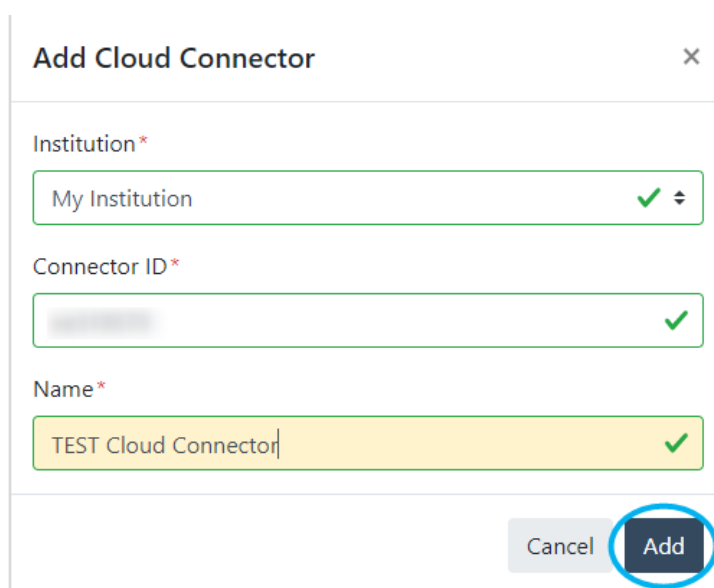
3) Click the URL of SonicDICOM PACS Cloud.

4) The following page of SonicDICOM PACS Cloud will appear: Admin Settings > Server > Connection



Click "Add Cloud Connector".

5) Dialog of "Add Cloud Connector" will appear.

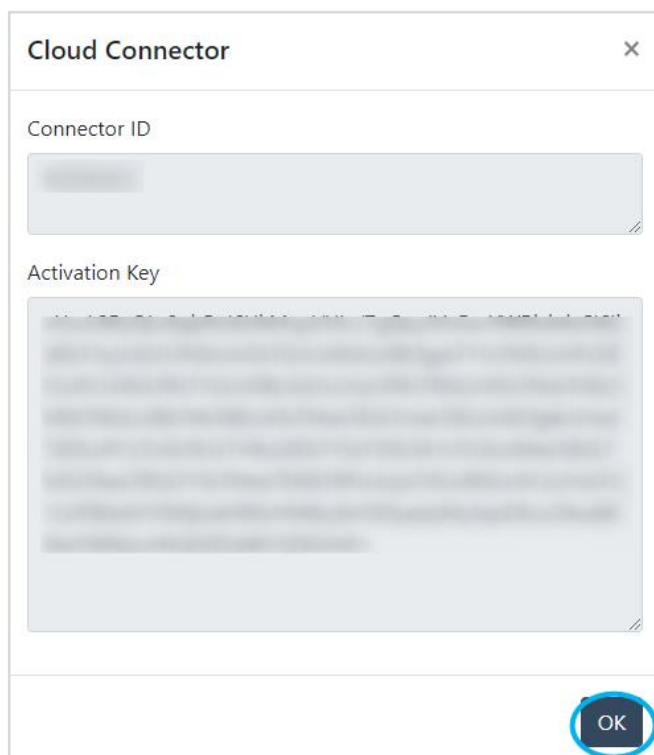


Enter/select the following information.

- Institution: Select an institution.
- Connector ID: Paste the copied Connector ID.
- Name: Enter the name of SonicDICOM Cloud Connector to identify this setting.

### 2.1.3 Activate SonicDICOM Cloud Connector

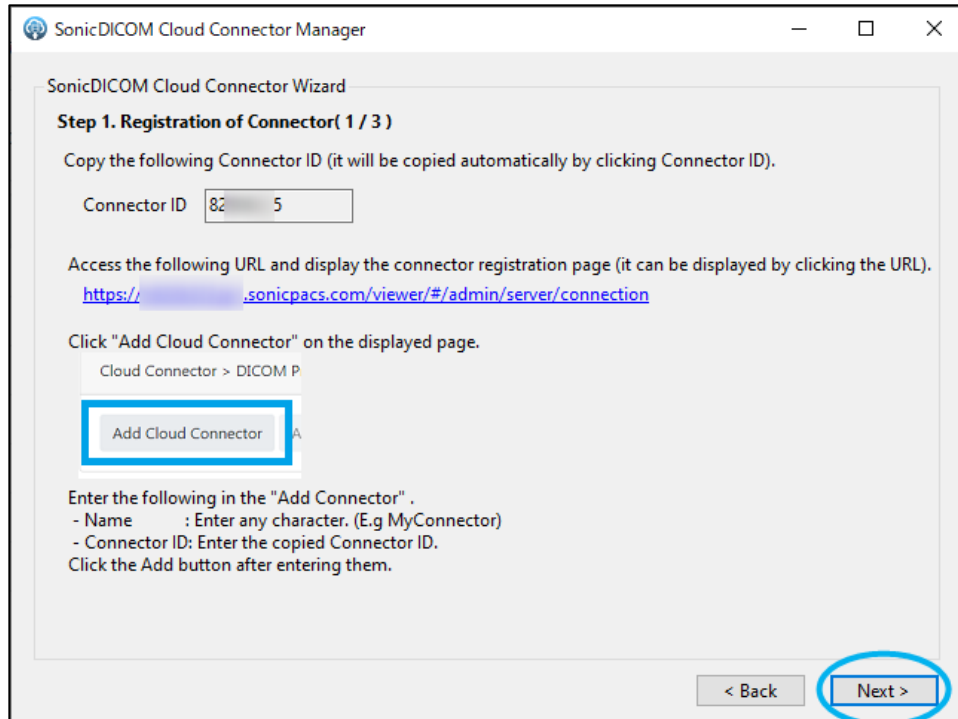
1) Dialog of "Cloud Connector" will appear.



By clicking on "Activation Key", it will be copied automatically. (You can check the activation key later by following the step of Tips 2)

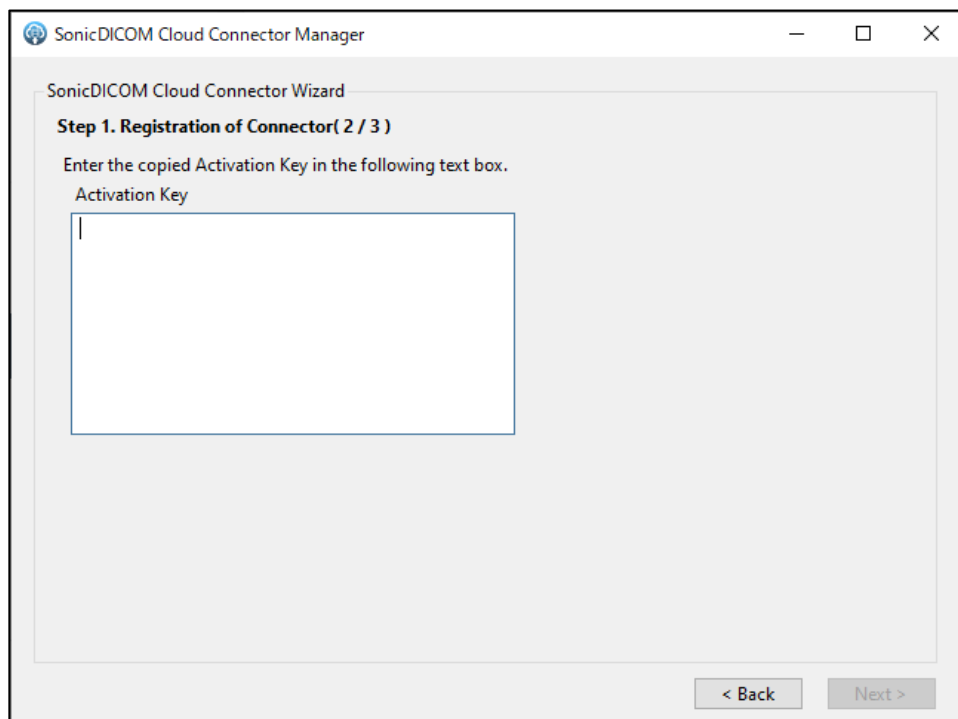
Click "OK" to close the dialog.

2) Return to the wizard "Step1. Registration of Cloud Connector (1/3)".



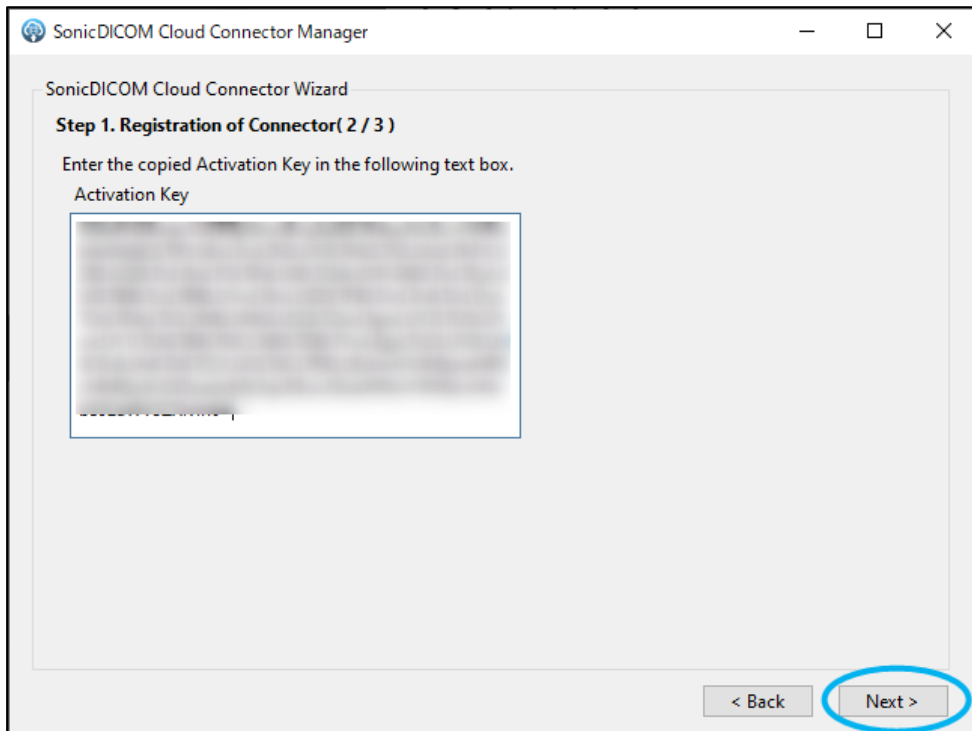
Click "Next".

3) Wizard "Step1. Registration of Cloud Connector (2/3)" will appear.

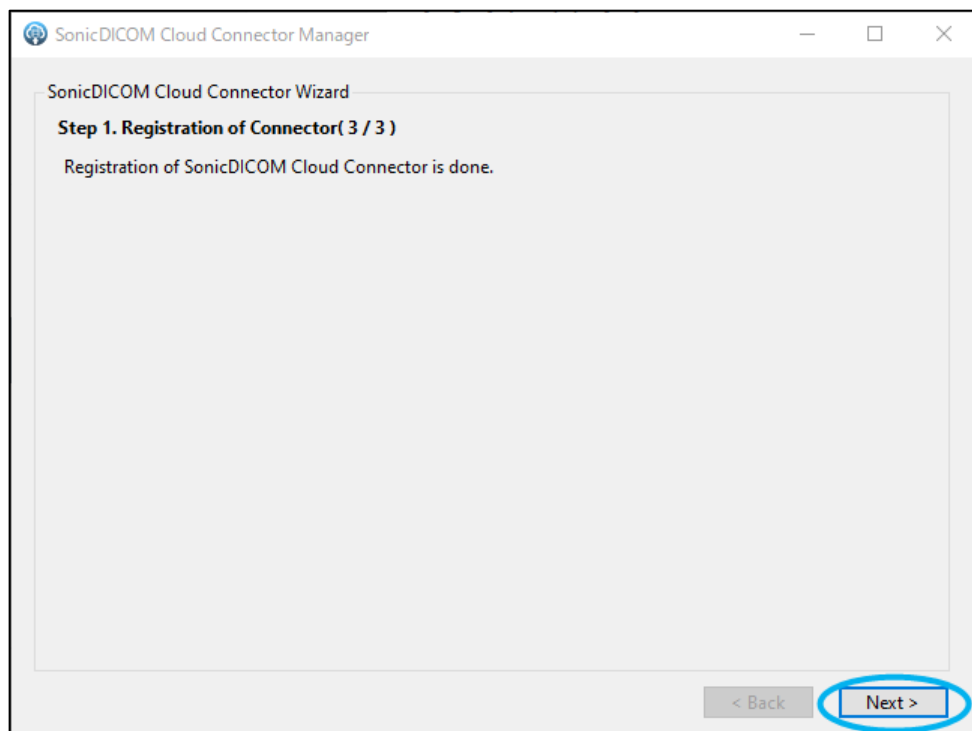


In the field for entering the activation key, paste the activation key that you copied.

4) Click "Next".



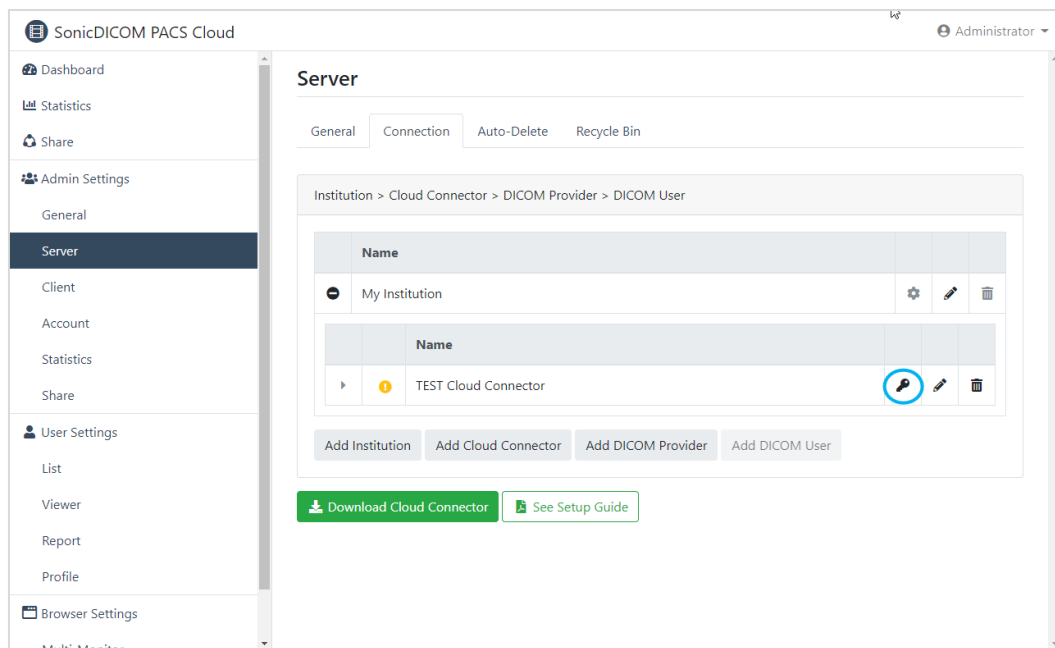
5) Wizard "Step1. Registration of Cloud Connector (3/3)" will appear.



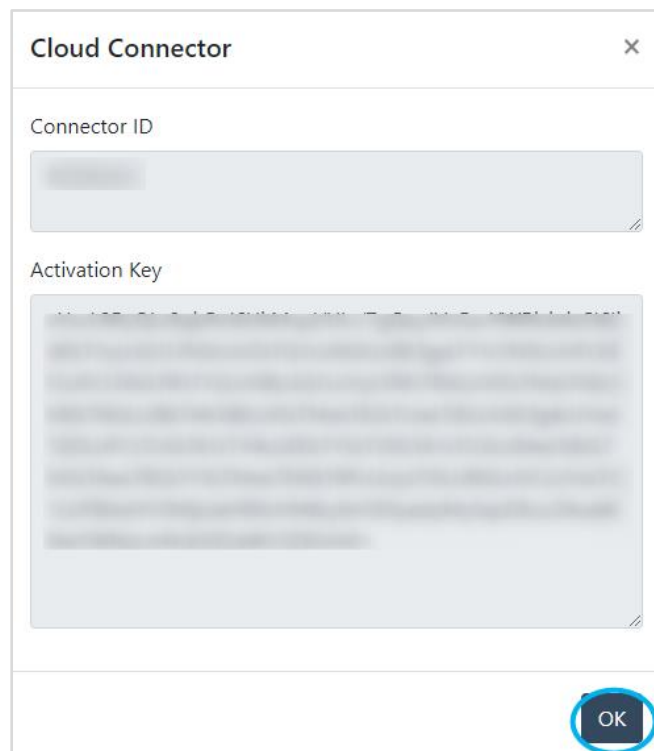
Registration of SonicDICOM Cloud Connector is completed.

## Tips 2: How to check the activation key of SonicDICOM Cloud Connector

- 1) Open the following page of SonicDICOM PACS Cloud: Admin Settings > Server > Connection



- 2) Click  icon.
- 3) Dialog of "Cloud Connector" will appear.



Click on "Activation key", and it will be copied automatically. Click OK to close the dialog.

## 3. Add DICOM Provider

### 3.1 Check necessary information

To upload the images received from modalities to SonicDICOM PACS Cloud, you need to register the information of DICOM Provider and DICOM User to SonicDICOM Cloud Connector.

- DICOM Provider means the information of the one receiving images.

In this case, it refers to the information of the PC on which SonicDICOM Cloud Connector was installed.

- DICOM User means the information of the one sending images.

In this case, it refers to the information of modalities.

Necessary information for this registration is "IP Address", "Port Number", and "AE Title". Each of these is explained below as well as how to check them.

#### 3.1.1 How to check your IP Address

IP Address is like home addresses or telephone numbers on an IP network.

On Windows default setting, IP Address is configured automatically every time it connects to a network. In this state, IP Address could be changed at the time of OS start up and so on. So, you need to change this setting and fix the IP Address in devices that will do DICOM communication.

Please refer to the following link for how to set fixed IP Address:

<https://docs.sonicdicom.com/install-manual/set-fixed-ip-address>

Please make sure you understand network and please set IP Address properly.

If you do not understand, please ask your network administrator or another person who can assist.

#### 3.1.2 How to check your Port Number used for DICOM communication

Port Number is the number to identify the program that the computer uses for communication.

The port number used for DICOM communication is set as 104 if you do not make any changes after installing SonicDICOM Cloud Connector and use the default value as it is.

You will need to change the port number if it is already used for another program.

You can check and change this setting at Admin Settings > Server > Connection of SonicDICOM PACS Cloud.

#### 3.1.3 How to check your AE Title

AE Title is the name for identifying the application that will do DICOM communication.

The AE Title of SonicDICOM PACS is set as "Provider1" if you do not make any changes after installing SonicDICOM Cloud Connector and use the default value as it is. You can check and change this setting at Admin Settings > Server > Connection of SonicDICOM PACS Cloud.

The basic parameters for DICOM provider are set as below if you do not make any changes after installing SonicDICOM Cloud Connector and use the default value as it is.

- IP Address: Check the IP address of the PC on which SonicDICOM Cloud Connector was installed (it varies depending on the environment).

Please refer to the following link for how to set fixed IP Address:

<https://docs.sonicdicom.com/install-manual/check-your-ip-address>

- Port Number: 104
- AE Title: Provider1

## 3.2 Add DICOM Provider

Register DICOM Provider of SonicDICOM Cloud Connector.

1) Wizard "Step2. Setting of DICOM Provider in Connector (1 / 2)" will appear.

SonicDICOM Cloud Connector Manager

SonicDICOM Cloud Connector Wizard

**Step 2. Setting of DICOM Provider in Connector ( 1 / 2 )**

Set DICOM Provider information of SonicDICOM Cloud Connector.  
Enter DICOM Provider information.

1 Provider Name

2 Port

3 AE Title

4 Option  Allow DICOM Connection with unregistered DICOM User.

Provider Name: A value used to identify DICOM Provider. Enter any string.  
Port: The port number of the connector used during DICOM communication.  
Enter a port number that is not used on this computer yet.  
AE Title: AE title of the connector used during DICOM communication. Enter any string.

< Back Next >

2) Enter the following information.

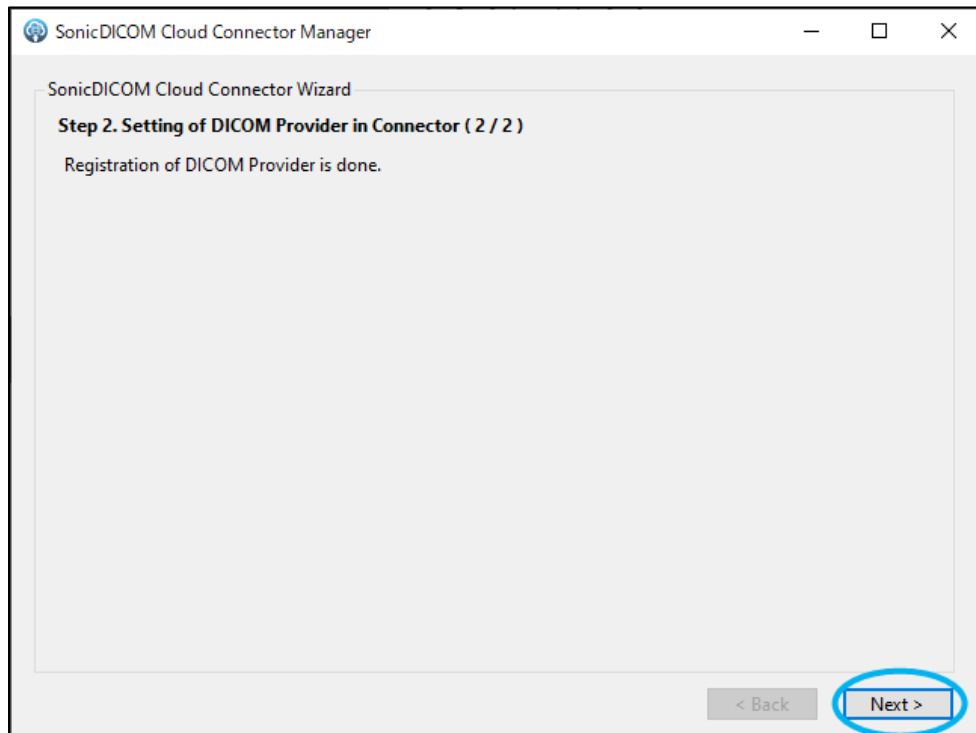
- Provider Name :  
A value used to identify DICOM Provider. Enter any string.
- Port :  
The port number of Cloud Connector used during DICOM communication.

Enter a port number that is not used in the PC on which SonicDICOM Cloud Connector will be installed.

- AE Title :  
The AE Title of Cloud Connector used during DICOM communication. Enter any strings.
- Option :  
Put a checkmark in the box to allow DICOM Connection with unregistered DICOM user.

After you entered all the items, click "Next."

3) Wizard "Step2. Registration of DICOM Provider (2 / 2)" will appear.



Registration of Provider is done. Click "Next".

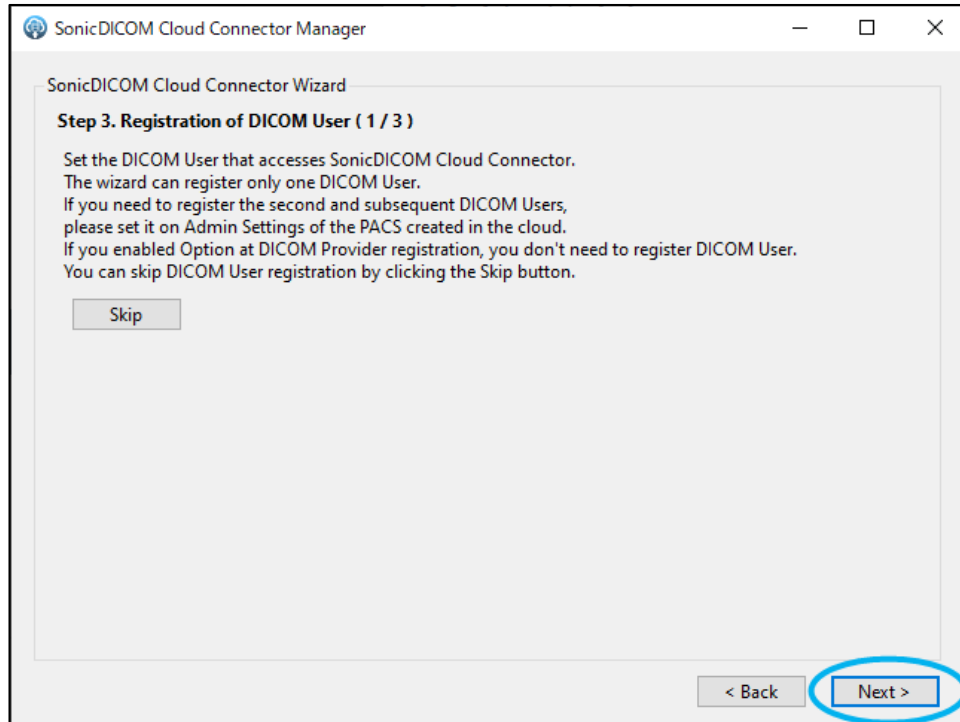


## 4. Register DICOM User

### 4.1 Register DICOM User

Register DICOM User of SonicDICOM Cloud Connector

1) Wizard "Step3. Registration of DICOM User (1 / 3)" will appear.



Register DICOM User that accesses SonicDICOM Cloud Connector.

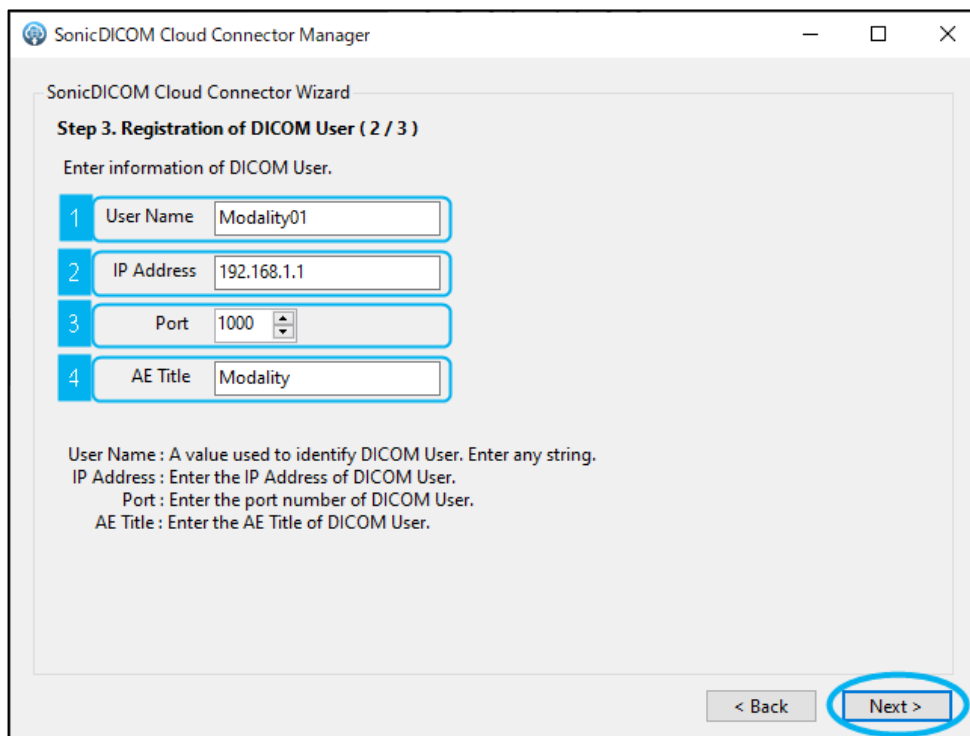
The wizard can register only one DICOM User. Click "Next".

\* To register second or subsequent DICOM user, please access SonicDICOM PACS Cloud > Admin Settings > Server > Connection.

\* If "Option: Allow DICOM connection with unregistered DICOM user" is enabled in Admin Settings > Server > Connection, the DICOM user will be registered automatically even if it is not registered (provided that DICOM connections have not reached the maximum number).

\* If you would like to skip the registration of DICOM User, click "Skip" to close the wizard.

2) Wizard "Step3. Registration of DICOM User ( 2 / 3 )" will appear.

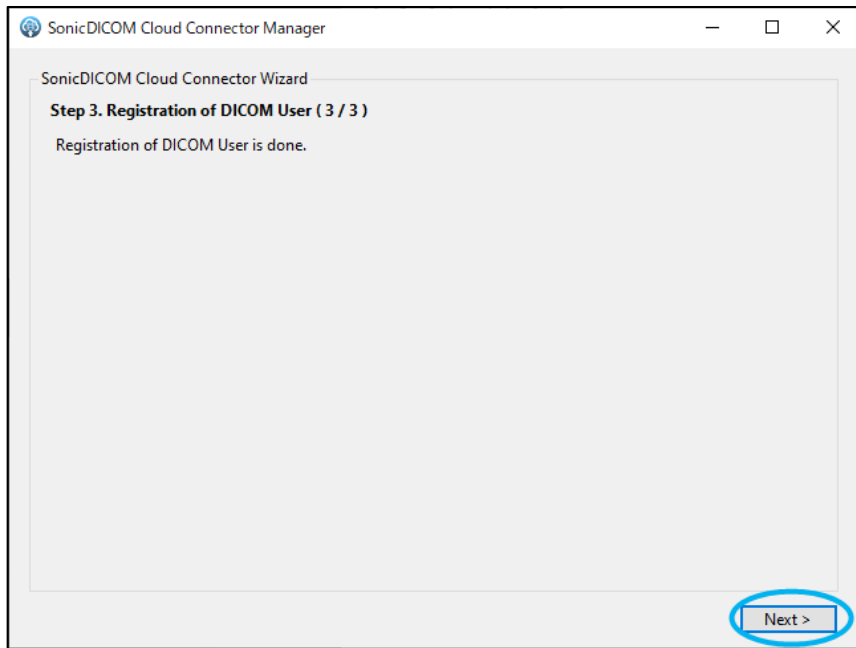


Enter the following information.

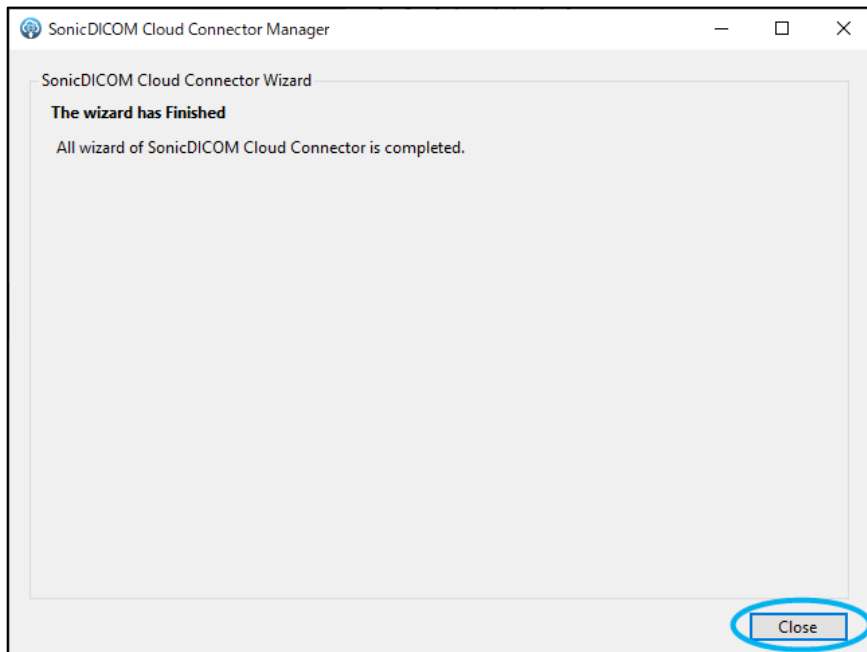
- User Name: A value used to identify DICOM User. Enter any string.
- IP Address: Enter the IP Address of DICOM User.
- Port: Enter the port number of DICOM User.
- AE Title: Enter the AE Title of DICOM User.

After you entered all the items, click "Next."

3) Wizard "Step3. Registration of DICOM User (3 / 3)" will appear.  
Registration of DICOM User is done. Click "Next".



4) Wizard "The wizard has finished" will appear.



All wizard of SonicDICOM Cloud Connector is completed.  
Click "Close" to close the wizard.

## 4.2 Add information of SonicDICOM Cloud Connector to modality

You need to register the information of SonicDICOM Cloud Connector to the modalities to be connected with SonicDICOM PACS Cloud.

- **IP Address of the PC on which SonicDICOM Cloud Connector was installed**
- **Port Number of the PC on which SonicDICOM Cloud Connector was installed**
- **AE Title of the PC on which SonicDICOM Cloud Connector was installed**

The setting method differs depending on each modality, so if you are not sure, please check with the manufacturer's support staff or another person who can assist.

\* When SonicDICOM PACS Cloud Connector receives via DICOM communication, it will check if the DICOM user is already registered.

If "Option: Allow DICOM connection with unregistered DICOM user" is enabled in Admin Settings > Server > Connection, the DICOM user will be registered automatically even if it is not registered (provided that DICOM connections have not reached the maximum number).

When DICOM user is automatically registered, its AE title and IP address will be obtained from the communication information, but its port number cannot be obtained and will be registered as "1000".

## 4.3 Restart SonicDICOM Cloud Connector

Back to SonicDICOM Cloud Connector Manager and check that following information is displayed.

- Service : "Stopped "
- License > License Status : "Active"
- License > Cloud URL : The URL of your cloud PACS

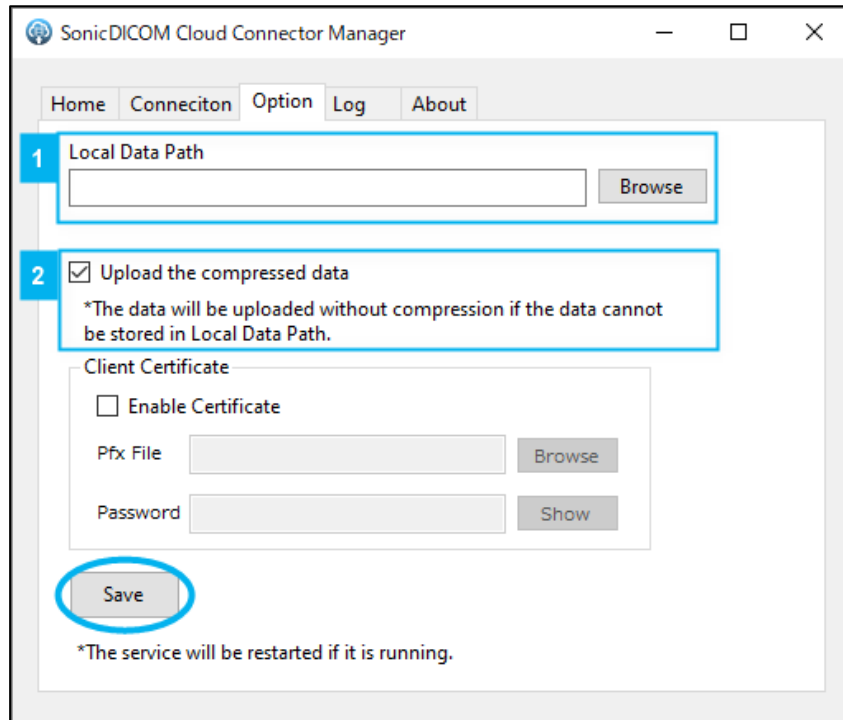
Then, click "Start".

# 5. Optional Settings

## 5.1 Upload the compressed data

Uploading DICOM files to SonicDICOM PACS Cloud without compressing them will overload the storage capacity of PACS.

By configuring the following settings, you can store DICOM files in local and compress them before uploading.



1) Configure a local path to store DICOM files to be uploaded.

Open SonicDICOM Cloud Connector Manager > Option.

In Local Data Path, click "Browse" and specify the local location to store it.

2) Configure the settings to upload the DICOM file compressed.

Put a checkmark "Upload the compressed data" to enable this option.

By enabling this option, compressed DICOM files will be uploaded to SonicDICOM PACS Cloud.

If this option is not enabled, uncompressed DICOM files will be uploaded to SonicDICOM PACS Cloud.

Also, configure the settings for Client Certificate.

Put a checkmark "Enable Certificate" in "Client Certificate" section.

- Pfx File: Click "Browse" and specify the location where Client Certificate is stored.
- Password: Enter the password of Client Certificate.

3) Click "Save" and save the settings.

\* If DICOM file could not be compressed, it will be uploaded to SonicDICOM PACS Cloud uncompressed.

\* Regardless of whether the option is enabled or disabled in 2), DICOM file will be saved locally uncompressed.

\* If you would like to upload the file compressed, be sure to specify the local location to store it in 1).